



APG CASH DRAWER®

CASH BASES  SOLUTION

# SMARTtill™

CASH MANAGEMENT SOLUTION



## A Quantum Change in Cash Management

The **SMARTtill™** Solution is a new revolution in cash management, enabling retailers to eradicate cash losses, reduce the cost of cash handling and improve in-store productivity. The **SMARTtill™** Solution is an innovative cash management system suitable wherever cash is transacted.

The **SMARTtill™** Intelligent Cash Drawer captures, in real-time, all cash activity at its location and reconciles to sales made. This information is collected without affecting transaction time and without interrupting the retail transaction. The **SMARTtill™** Solution can be integrated with your POS hardware/POS application.

**SMARTtill™** Cash Manager Software provides vital reports from each **SMARTtill™** unit allowing instant cash visibility at the POS enabling in-store cash handling activities to be performed proficiently, supported by real-time cash on-hand information.

All your cash counted and secured;

note by note... coin by coin... second by second

CASH HANDLING EXCELLENCE



### Reliable

Tested to last beyond  
1 million operations

### Accurate

100% accurate  
cash value &  
reconciliation data



### Easy to install and use

Normal till  
operation for cashier

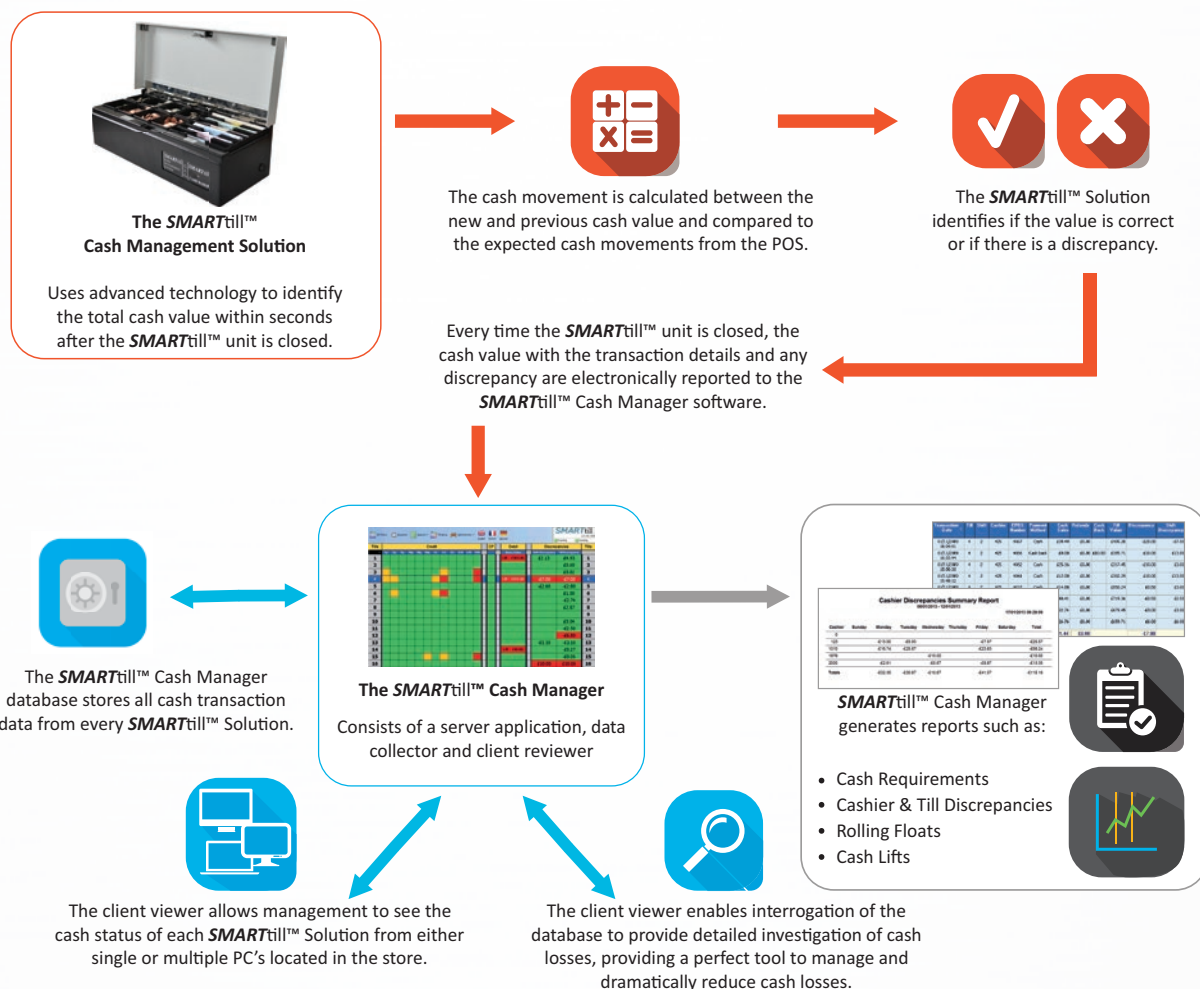


### Fast

Instant discrepancy  
alert, by operator,  
shift and time

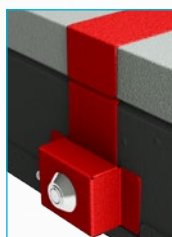


# How Does The **SMARTtill™** Cash Management Solution Work?



## 460 ST2 Flip Lid Intelligent Cash Drawer Features:

- |   |  |
|---|--|
| <p><b>Size:</b></p> <ul style="list-style-type: none"> <li>• 460W x 197D x 139H mm with baseplate</li> <li>• 18.2W x 7.75D x 5.47 H inches with baseplate</li> </ul> <p><b>Construction/ Colour:</b></p> <ul style="list-style-type: none"> <li>• Robust steel construction available in a wide range of colours including stainless steel lid</li> </ul> <p><b>Life Cycle:</b></p> <ul style="list-style-type: none"> <li>• Tested to a minimum of one million operations</li> </ul> <p><b>Power requirement:</b></p> <ul style="list-style-type: none"> <li>• 12V - 40V DC at 6 Watts (Dynamic Automatic Voltage)</li> <li>• Optional supply Power Over Ethernet (Class 3 - 48vdc)</li> </ul> <p><b>Interfaces:</b></p> <ul style="list-style-type: none"> <li>• Standard cash drawer kick out</li> <li>• RS232 and built-in USB</li> <li>• Built-in Ethernet connectivity for SMARTtill™ Cash Manager data aggregation</li> </ul> <p><b>POS Software Interfaces:</b></p> <ul style="list-style-type: none"> <li>• Direct command protocol</li> <li>• XML file protocol</li> <li>• Windows JAVAPOS &amp; OCX Drivers</li> </ul> <p><b>Software:</b></p> <ul style="list-style-type: none"> <li>• SMARTtill™ Cash Manager Software optional</li> </ul> | <p><b>Insert Aspects:</b></p> <ul style="list-style-type: none"> <li>• 6 note compartments</li> <li>• 8 removable coin cups</li> <li>• Configurable to Euro &amp; Sterling currencies</li> <li>• Load bearing sensors beneath each coin and note compartment</li> <li>• Maximum coin float value: £400</li> <li>• Maximum number of notes in each compartment: circa 100</li> </ul> <p><b>Security:</b></p> <ul style="list-style-type: none"> <li>• Optional hasp/deadlock with random or alike keys</li> </ul> <p><b>Fixing:</b></p> <ul style="list-style-type: none"> <li>• Bolt down facility in base</li> </ul> <p><b>Regulatory Compliance:</b></p> <ul style="list-style-type: none"> <li>• This SMARTtill™ Intelligent Cash Drawer carries the CE and WEEE logos</li> </ul> |
|---|--|



Optional hasp/deadlock



The SMARTtill™ Intelligent Cash Drawer locks into the baseplate



The quick release latch enables easy removal of the SMARTtill™ Intelligent Cash Drawer from the baseplate